

Tank Level A121

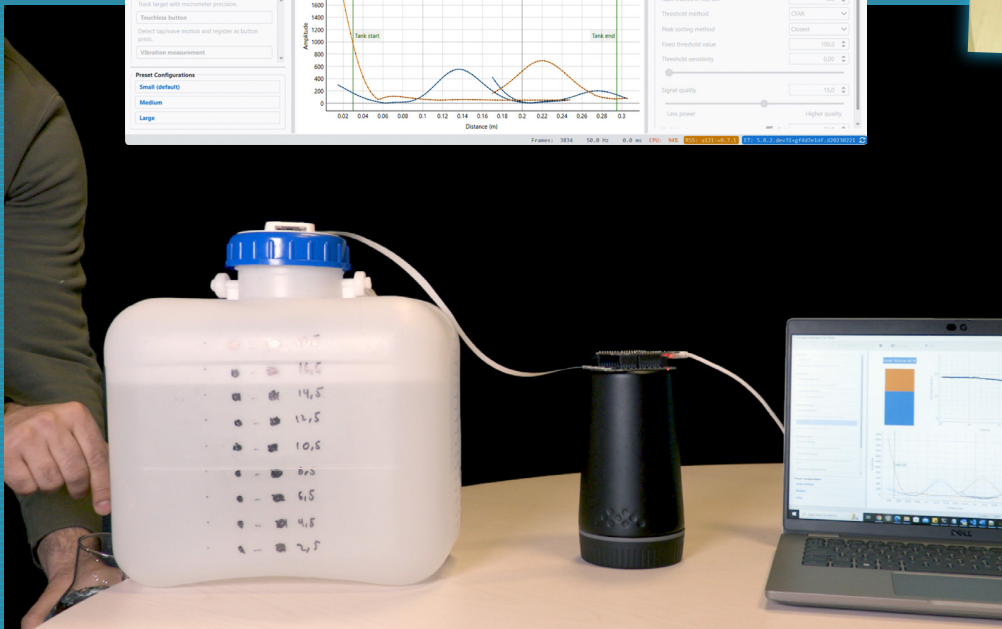
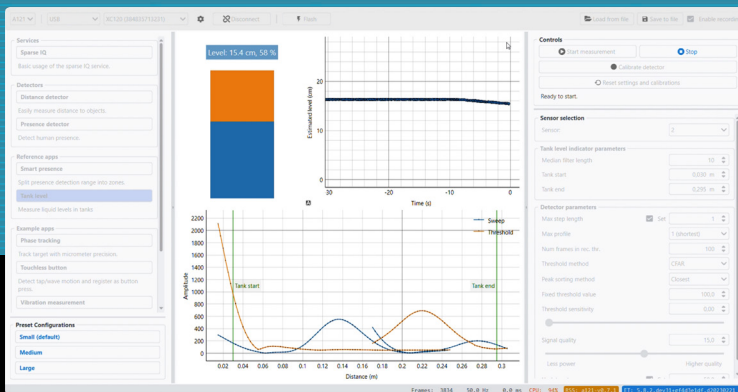
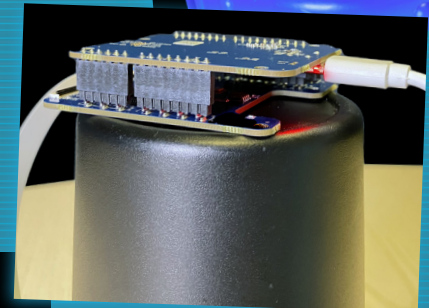
Reference Application

EXPLORE THE NEXT SENSE

A reference application is Acconeer's way to give you a jump start in your development. This reference application uses the unique features of the A121 to the maximum. The Tank Level application can be used together with our XM125 module, including our reference lenses, or in any custom design created by you. Depending on what tank you intend to use, there are three different variants: **Small** for heights less than 0.5 m, **Medium** for up to 6 m, and **Large** tank for up to 23 m. The sensor can handle most types of liquids but also solid materials such as seeds, pellets, or fertilizer.

Proof of concept
for tank level
use case

XS121



In the example above we are slowly emptying our small test tank and millimeter accuracy is achieved throughout the whole range. Try it for yourself with Acconeer's Exploration Tool.

In typical use cases, tank level measures are made every 10 minutes. With the battery driven Acconeer A121 PCR sensor, the power will last for years to come:

Tank depth	Update rate	Power
Small tank 0.03 – 0.5 m	0.1 Hz	0.08 mW
	1 Hz	0.65 mW
Medium tank 0.05 – 6 m	0.1 Hz	0.31 mW
	1 Hz	2.88 mW
Large tank 0.1 – 15 m	0.1 Hz	0.99 mW
	1 Hz	9.72 mW

Memory usage (RAM)

Small	15 kB
Medium	19 kB
Large	21 kB

Download SDK including reference application at:
developer.acconeer.com

